

ROSEWOOD CROSSING OFFERS PREMIUM APARTMENT LIVING


FUTURE COMMUNITY AMENITIES


- **Rosewood Crossing Community Party and Sports rooms.** Here all tenants will have the ability to reserve the party room for events and use the sports room with a wood gym floor w/basketball hoop and other sports activities.
- **Park & Picnic Area.** Future phase of Rosewood Crossing will have a great park and picnic area located in the common space that backs up to all the buildings. Picnic shelters and grills, plus a play area for the kids.

PREMIUM UPGRADES

- **In Unit Laundry**
- **In Floor Heat**
- **Stainless Steel Appliances**
- **Granite Countertops**
- **Video Surveillance Security**
- **Patio or Deck Rear Units**
- **Garage Rental Available**



 2800-2870 145 th St W, Rosemount, MN

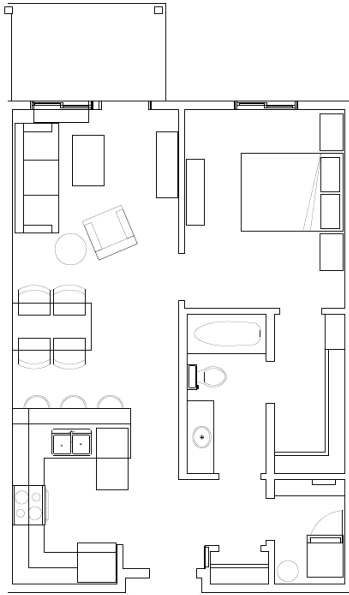
 (651) 686-0344

 www.rwcapartments.com

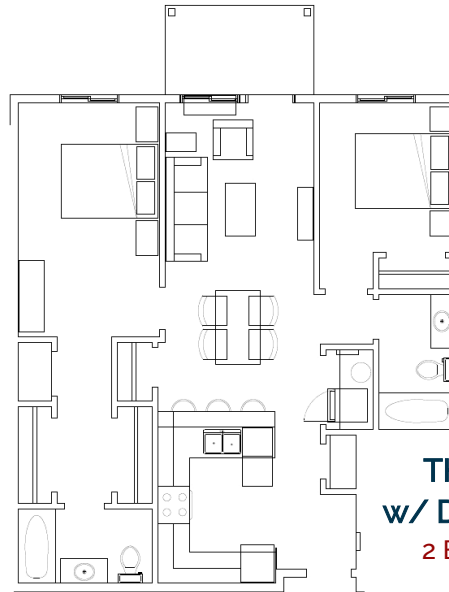
 info@rwcapartments.com

Premium 1 & 2 Bedroom Apartments
with Great Community Amenities

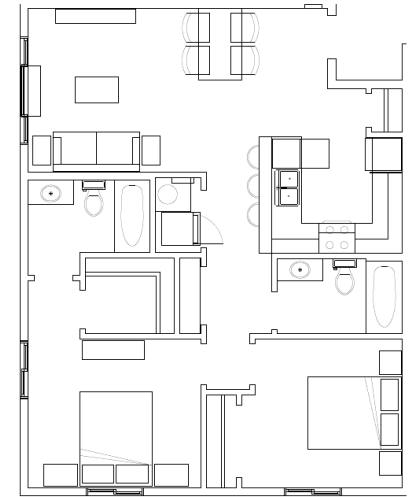
www.rwcapartments.com



THE SINGLE
w/ DECK
or PATIO
1 BED • 1 BATH
675 SQ FT

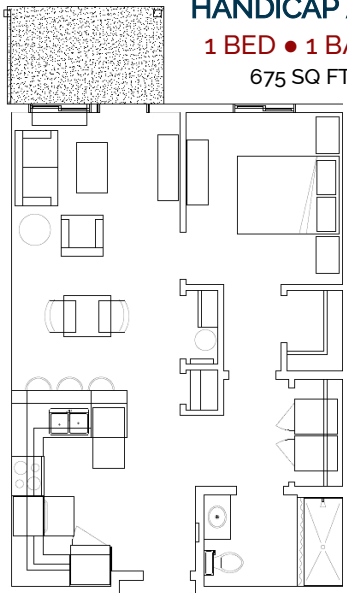


THE CENTER
w/ DECK or PATIO
2 BED • 2 BATH
924 SQ FT



THE END
2 BED • 2 BATH
882 SQ FT

THE SINGLE
w/ PATIO
HANDICAP ACC.
1 BED • 1 BATH
675 SQ FT



LOTS OF UPGRADES... AMAZING LOCATION

ENERGY EFFICIENT

With in-floor heat and high energy appliances, utility costs should be low with your comfort level high.

TECHNOLOGY DRIVEN

Key fob tenant entry system w/ cell calls for guest entry. Available fiber Internet with speeds up to 1 GB/s.

ON-SITE CARETAKER & LEASING OFFICE (coming soon)

THE SINGLE
1 BED • 1 BATH
675 SQ FT

